



**Pilgrim Evangelical
Lutheran Church**
820 Belknap Street
Superior, WI 54880
(715) 392-4731

Non-profit Organization
U.S. POSTAGE PAID
Superior, WI 54880
Permit No. 1194

Sunday Worship Service: 9:30 a.m.
Website: www.plcsuperior.org
Facebook: [PilgrimSuperior](https://www.facebook.com/PilgrimSuperior)

RETURN SERVICE REQUESTED

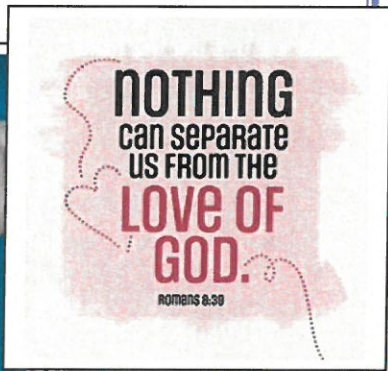
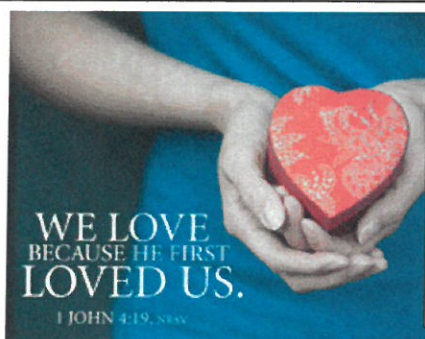
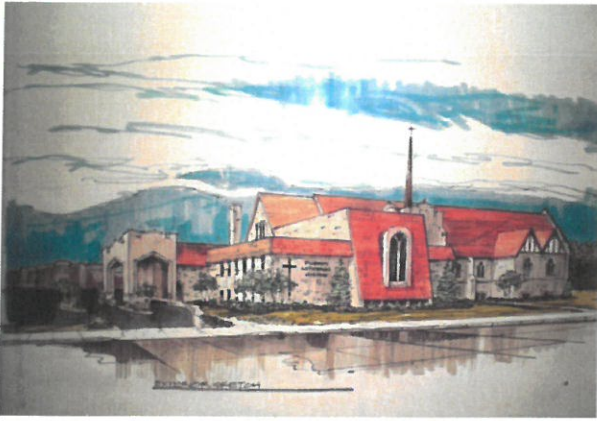


Table of Contents

Title page	2
Financial Report	2
Church Attendance	2
Chess Tournaments	2
Servers	3
Scripture	3
Snowbirds	3
Community Meals	3
Pastor's Report	4
Draw Strong Bag making class	5
SOUPer Bowl Sunday!	5
Coins for the Community	5
Community School—Food Prep Class	6
Archives meeting	6
Theology on Tap	6
Evening Prayer Worship	6
Cold Weather Collections	6
Line Dancing	7
Joint Superior ELCA Worship Service	7
Lutheran Disaster Response — California Wildfires	7
February Calendar	8



Monthly Pilgrim Progress

To make things easy we are going to have the Progress deadline be the **15th of each month**. If there is a problem contact Judy and talk to her.

Church Office Hours

Monday—Thursday: 9:00 am—1:00 pm
Church Phone: 715-392-4731

E-mail and Website Addresses

officemgr@plcsuperior.org (Judy)
tanner@plcsuperior.org (Pastor Tanner)
noah@plcsuperior.org (Noah)

Church website: www.plcsuperior.org
Facebook: PilgrimSuperior
Synod website: www.nswi.org
ELCA website: www.elca.org

Financial Report

December 2024

Will be in the next Newsletter.

Leadership

Pastor Rev. Tanner Howard
Office Manager Judy Hagen
Custodian Anna Johnson
Music Director/Pianist Lorelei Holland
Violinist Eliza Wilson
Choir Director Curt Hanson
Education Coordinator Rebecca Waterhouse
Financial Secretary Julie McLaren
SAM (Synodically Authorized Minister) Jenny Carey Dudderar
High School Youth Leader Noah Holland

COUNCIL

Council President . . . Dan Breneman
Council Vice-President . . . Tad Matheson
Council Secretary Courtney Dietsche
Congregation Treasurer Don Miller
Mary Johnson-Garay, Colleen Elonen,
Ted Nelson, Sandy Breitzmann and Jeff Gronski

PLC ONLINE ~ Check out Pilgrim's website at www.plcsuperior.org for the monthly calendar and newsletter, pictures, and much, much more.

PLC ON FB: Go to your **FACEBOOK** page. Enter 'Pilgrim Superior' in the search box. When Pilgrim's FB comes up, 'LIKE' it. You can then see regular PLC news, updates and photos.

Church Attendance

December 2024 –

(5 Sunday Services / 2 Christmas Eve evening Services)

Total In-House Sunday Attendance:	488
Average In-House Sunday Attendance:	70
Total Online Sunday Attendance:	222
Average Online Sunday Attendance:	32

Chess Tournaments

Eliza is hosting on the 2nd Sunday of the each month from 11:30-5:00 Chess Tournaments.

If you would like to find out more . . . talk to her when you see her. She can give you much more information.



Below is the list of those who are signed up to help with our worship service. If you are signed up and cannot make it, please find someone to fill in for you and also let the office know. Thank you to all of you for helping with our worship here at Pilgrim. Praise God from whom all blessings flow!!

February 2 – Presentation of Our Lord

Ushers: Team 4: Tyler Austreng, Capt.
Worship Asst: Noah Holland
Sound System: Fred
Altar Guild: Elaine and Mary
Hospitality: Richard Erickson
Greeter: ??? anyone

February 9 – Fifth Sunday after Epiphany

Ushers: Team 1: Ted Nelson, Capt.
Worship Asst: Molly Warring
Sound System: Tyler
Altar Guild: Sandy and Theresa
Hospitality: Craig Peterson
Greeter: ??? anyone

February 16 – Sixth Sunday after Epiphany

Ushers: Team 2: Tad Matheson, Capt.
Worship Asst: Colleen Elonen
Sound System: Greg
Altar Guild: Laura and Greg
Hospitality: Anna Hansen and Joan Altman
Greeter: ??? anyone

February 23 – Seventh Sunday after Epiphany

Ushers: Team 3: Jeff Gronski, Capt.
Worship Asst: Julie McLaren
Sound System: Jeff
Altar Guild: Rachel and Colleen
Hospitality: Colleen Elonen
Greeter: Sandy Breitzmann

Scripture Readings February 2025 Lectionary C

February 2 – Presentation of Our Lord

Malachi 3:1-4
Psalm 24:7-10
Hebrews 2:14-18
Luke 2:22-40

February 9 – Fifth Sunday after Epiphany

Isaiah 6:1-13
Psalm 138
1 Corinthians 15:1-11
Luke 5:1-11

February 16 – Sixth Sunday after Epiphany

Jeremiah 17:5-10
Psalm 1
1 Corinthians 15:12-20
Luke 6:17-26

February 23 – Seventh Sunday after Epiphany

Genesis 45:3-11, 15
Psalm 37:1-11, 39-40
1 Corinthians 15:35-38, 42-50
Luke 6:27-38

Hey Snow Birds and Winter Travelers

If you are going to be away please let us know. The post office will not hold bulk mail. Which is what the newsletters are. Either give us a forwarding address or we can hold your newsletters until you get back then mail them to you.

They charge the church extra when they are returned. Thanks and have a wonderful winter.

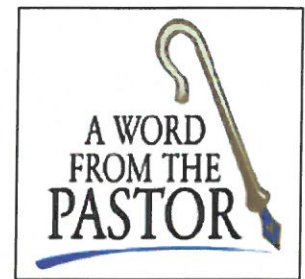
Sunday Night Suppers

Join us on Sunday evenings for a **Community Meal at 5:30**. Following the format of our campus ministry meals last fall, we are excited to open the doors to anyone who would like to join us for food and fellowship every Sunday here at Pilgrim. Please note that we will be responsible for providing the meal on Sunday, February 16th.



February 2025

Saints and Siblings in Christ,



As we celebrate this season after Epiphany, we are confronted by a wonderful array of stories from the scriptures, all pointing to the revelation of God among us. We read about miracles and healings. Prophecy and praise. Blessings and benedictions. We hear about unexpected people from unexpected places being called by God to share the good news again and again and again. This season centers God's story and encourages us to ponder deeply the ways in which our stories are centered in and by that epic narrative of what God is up to in the world.

At the beginning of the January our Stewardship Team invited Pastor Taryn Montgomery to preach and lead us in our first session of The Generosity Project – as we prepare together to dig into the Generous Together program throughout 2025. Part of this work is helping us to address our finances and continue to 'right the ship' as we move forward in ministry together. But the bulk of this work is just that: ministry together. Pastor Taryn spoke about three areas: what we can do, what we can't do, and somewhere in between, what we are being CALLED to do. So this year we will take a look at the many assets of this congregation – our time, our space, our talents, our finances – and figure out just what we're being called to.

And then, people of God: we'll do it. Together. It really is that simple.

Sometimes we get caught up in the weeds in ministry. We overcomplicate things, over-study, over-plan, over-do. And sometimes those things are needed. Sometimes we need to dig deep and root out issues or make those Big Plans for the future. But ministry at its core is simple: God's people working together for the sake of the neighbor. There are a lot of ways that we do that, and there are a lot of ways that we can do that even better. I have no doubt that together we will answer God's call faithfully and, recognizing challenges and rejoicing in successes, we will continue to center God's story in this place as we proclaim the good news to all.

In Christ,
Pastor Tanner



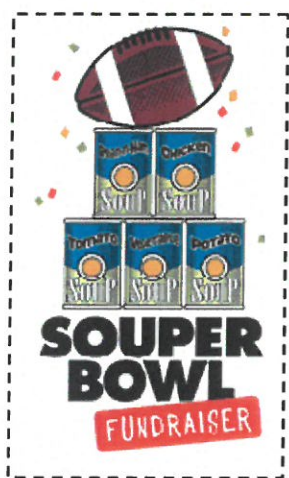
Pilgrim Community School will be hosting another **Draw string bags making class.**

Saturday, Feb. 22 from 9:00 am to 12:00 pm
Fellowship Hall, Pilgrim Lutheran Church,
820 Belknap St., Superior, WI
715-392-4731

We will be making Draw string bags of various sizes. Please bring one yard of cotton or twill material to use on the bag. Draw strings will be provided. Bring your sewing machine if you are able. This is open to all ages! Please call the office or email celonen@yahoo.com and let us know if you are coming so we can have materials ready. Otherwise, just show up!



SOUPer Bowl Sunday!



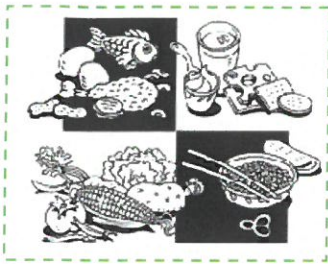
Join in a friendly competition between the ELCA congregations of Superior as we work together to tackle hunger in our community. On Sunday, February 9th (Super Bowl Sunday) you are encouraged to bring in a nonperishable, easy-open food item or personal hygiene item. All donations will go toward stocking the free food shelf at Zion Lutheran Church, and the congregation who collects the most items will receive a fabulous prize – to be presented at our Joint ELCA Worship Service on February 23rd at 10:00 at Zion Lutheran Church. Let's Go Pilgrim!

Coins for the Community.

We will be collecting spare change for The Ruth House for January and February. \$39.85 came in for the Ministerium's Good SAMaritan Fund. Thank you for your support!



Still collecting pop tabs. They will be going to the Ronald McDonald house in Duluth. These go to the funding of having families stay with their kids while they are in the hospital. It means so much to be able to have your family with you when you are going through medical things. Lets fill up the jars.



Community School – Food Prep Class

Our friends at Live Well! Northern WI are hosting a Food Prep Class here at Pilgrim on Saturday, February 1st from 9-noon. You can register online at www.livewellnorthernwi.org.

Archives Team Meeting – February 5th | 9-noon

Interested in history? Want to learn more about our long history here as Pilgrim Lutheran Church? This is the group for you! Our new Archives Team will be meeting on Wednesday, February 5th from 9-noon. We are in the process of cataloging some of our 136-year history as Pilgrim People in Superior. Anyone is welcome to join us. Even if you can only come for part of the time. We'll look into what we have and develop a process of preserving and displaying objects. For more information contact Jean Miller or the church office.

Church Archives



Theology on Tap

A space for faithful folks and questioners alike to gather, learn, and grow in faith

Wednesdays at 7:00
@ Tap on Tower
1106 Tower | Superior

Questions? Contact Pastor Tanner at Pilgrim Lutheran Church

Come and join us!! Everyone is welcome!!

EVENING PRAYER

Join us for a time of meditative worship on Sunday evenings at 6:30. A time to calm your mind and talk to God. You are welcome here.

Pilgrim Lutheran Church
820 Belknap Street | Superior

New days – Service will be held on the 1st & 3rd Sunday of the month. In March it will also be on the 30th.



Coats for the Cold

Cold Weather Collections

Throughout the winter months we will continue to collect hats, coats, mittens, and socks to distribute to members of our community. Bring your donation in anytime and drop it in the box in the narthex. Thank you for generously caring for our neighbors in need!

Step in Line-Dancing Class

Dance class is starting up again. Line Dancing and more! All ages and abilities welcome! No sign up required. \$5.00 per class.

Class will be every Tuesday, from 5:00 – 6:00 p.m.

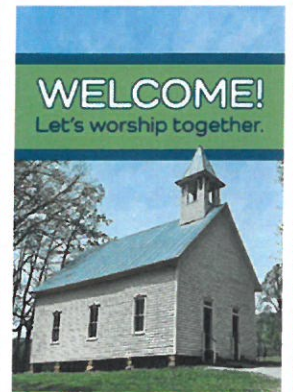
Interested or have any questions talk to Mary Johnson-Garay.

Talk to her at church, email her at stepnlinedance@gmail.com or call her at 218-393-3324.



Joint Superior ELCA Worship Service

We are excited to join with our ELCA siblings in Christ in another joint service on Sunday, February 23rd at 10:00 a.m. at Zion Lutheran Church (2022 E 2nd Street) with a potluck meal to follow. Please note, there will NOT be worship or Sunday School at Pilgrim that morning, so be sure to come on over to Zion as we join our voices together in worship and have some fun with our fellow Lutherans!



Lutheran Disaster Response - California Wildfires

Multiple wildfires have broken out across Los Angeles County in California, with tens of thousands of people under evacuation orders. Sparked by dry conditions, strong winds and a limited water supply, these fires have destroyed homes and businesses and have led to injuries and loss of life. News is still unfolding about the full impact as firefighting efforts continue.

Our Response as a Church: Lutheran Disaster Response is coordinating with the Southwest California Synod, Pacifica Synod and other partners to assess the needs of people impacted by the wildfires. We will work with them to provide for immediate needs and recovery amid the widespread destruction. Lutheran Disaster Response is committed to accompanying recovering communities for months and years to come.

What you can do?

Pray: Please pray for communities in California impacted by the wildfires. May God's healing presence bring them peace and hope in their time of need and give strength to those working diligently to contain the fires and care for affected communities.

Give: Your gifts to Lutheran Disaster Response equip us to respond to communities affected by wildfires and related disasters. These gifts also empower us to respond to disasters whenever and wherever they strike. Gifts to "U.S. Wildfires" will be used in full (100%) to assist those affected by wildfires until the response is complete.

To give by phone, call 800-638-3522. Visit www.LDR.org

Checks or money orders can be mailed to:

Lutheran Disaster Response
P.O. Box 1809
Merrifield, VA 22116-8009

Eliza's lessons scheduled
throughout the month

February 2025

	Sun	Mo	Tue	Wed	Thu	Fri	Sat
							1 9:00-1:00 Live Well Food Prep Class <i>Registration Required</i>
2	9:30 Worship-Usher 4 10:15 Sunday School 10:45 Bell Practice 4:00 NA Group 5:30 Community Meals 6:30 Evening Worship	3	4 11:00 Pastor's Text Study 4:00-5:30 Lessons, Teresa 5:00 Step in Line Dancing 5:30 Choir Practice 6:30 Praise practice	5 9:00 -Noon Archives Team meeting 4:00 Confirmation Class 4:45 Girl Scouts 7:00 p.m. Theology on Tap	6 10:00 Bible Study 5:00 CHMAS mtg. at Concordia	7	8
9	9:30 Worship-Usher 1— SOUPer Bowl Sunday 10:15 Sunday School 10:45 Bell Practice 11:30-5:00 Chess Tournaments—Eliza 4:00 NA Group 5:30 Community Meals	10	11 11:00 Pastor's Text Study 4:00-5:30 Lessons, Teresa 5:00 Step in Line Dancing 5:30 Choir Practice 6:30 Praise practice 6:30 Council Meeting	12 No Confirmation Class No Theology on Tap	13 No Bible Study	14	15 Progress Articles Due
16	TBA—Whalers Pancake Breakfast fundraiser 9:30 Worship-Usher 2 10:15 Sunday School 10:45 Bell Practice 4:00 NA Group 5:30 Community Meals 6:30 Evening Worship	17 <i>Office Closed</i>	18 11:00 Pastor's Text Study 4:00-5:30 Lessons, Teresa 5:00 Step in Line Dancing 5:30 Choir Practice 6:30 Praise practice	19 4:00 Confirmation Class 4:45 Girl Scouts 7:00 p.m. Theology on Tap	20 No Bible Study Pastor's Conference Gathering	21	22 9:00 Quarterly Quilters (Making draw string bags)
23	10:00 ELCA Worship at Zion Lutheran Church <i>Potluck to follow</i> 4:00 NA Group 5:30 Community Meals	24	25 11:00 Pastor's Text Study 4:00-5:30 Lessons, Teresa 5:00 Step in Line Dancing 5:30 Choir Practice 6:30 Praise practice	26 4:00 Confirmation Class 7:00 p.m. Theology on Tap	27 10:00 Bible Study	28	