



**Pilgrim Evangelical  
Lutheran Church**  
820 Belknap Street  
Superior, WI 54880  
(715) 392-4731

Non-profit Organization  
**U.S. POSTAGE PAID**  
Superior, WI 54880  
Permit No. 1194

**Sunday Worship Service: 9:30 a.m.**  
**Website: [www.plcsuperior.org](http://www.plcsuperior.org)**  
**Facebook: [PilgrimSuperior](https://www.facebook.com/PilgrimSuperior)**

RETURN SERVICE REQUESTED



## Quilters

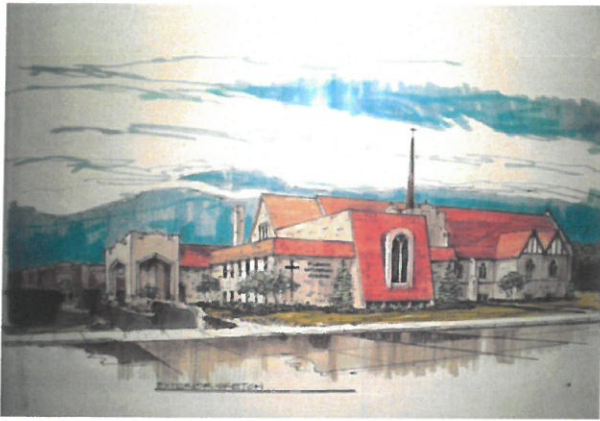


The Quarterly Quilters will meet on Nov 2nd from 9-12:00 to assemble quilts and continue to make draw string bags. We need people to iron tops, pin sides together, stitch or yarn baste. Everyone is welcome to come for some of the time or all of the time!. We also need help making more tied fleece blankets and stuffing the bags with the gifts for the Foster Care program. This is very easy to do, so fun for kids and families to learn how to make!

For more information, see Colleen Elonen or call her at 715 394 9195.

## Table of Contents

Title page . . . . .	2
Community Thanksgiving Meal & Worship. . . . .	2
Servers . . . . .	3
Financial Report . . . . .	3
Scripture. . . . .	3
Church Attendance . . . . .	3
Poinsettias . . . . .	3
Pastor's Report . . . . .	4
Theology on Tap . . . . .	5
Sunday Evening Prayer Worship . . . . .	5
Coins for the Community . . . . .	5
Attention All Thrivent Members . . . . .	5
Community School . . . . .	6
<i>(Canning Apple Pie Filling)</i>	
All Saints Sunday . . . . .	6
International Food Festival . . . . .	6
Youth News . . . . .	6
Christmas News . . . . .	7
Archives Team Meeting . . . . .	7
Bethlehem Garage Sale . . . . .	7
Update of Facility Projects . . . . .	8
Campus Ministry . . . . .	8
Lefse making class . . . . .	8
Flyers up around church . . . . .	9
Pilgrim Portrait - Violinist . . . . .	10
November Calendar . . . . .	11



### Monthly Pilgrim Progress

To make things easy we are going to have the Progress deadline be the **15<sup>th</sup> of each month**. If there is a problem contact Judy and talk to her.

### Church Office Hours

Monday—Thursday: 9:00 am—1:00 pm  
Church Phone: 715-392-4731

### E-mail and Website Addresses

officemgr@plcsuperior.org (Judy)  
tanner@plcsuperior.org (Pastor Tanner)  
noah@plcsuperior.org (Noah)

Church website: [www.plcsuperior.org](http://www.plcsuperior.org)  
Facebook: PilgrimSuperior  
Synod website: [www.nwswi.org](http://www.nwswi.org)  
ELCA website: [www.elca.org](http://www.elca.org)

### Leadership

Pastor . . . . . Rev. Tanner Howard  
Office Manager . . . . . Judy Hagen  
Custodian . . . . .  
Music Director/Pianist . . . . . Lorelei Holland  
Violinist . . . . . Eliza Wilson  
Choir Director . . . . . Curt Hanson  
Education Coordinator . . . . . Rebecca Waterhouse  
Financial Secretary . . . . . Julie McLaren  
SAM (Synodically Authorized Minister) . . . . . Jenny Carey Dudderar  
High School Youth Leader . . . . . Noah Holland

### COUNCIL

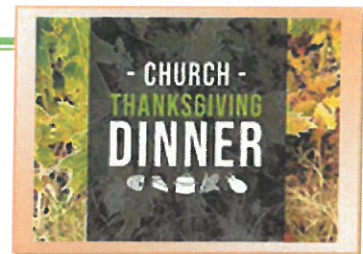
Council President . . . Dan Breneman  
Council Vice-President . . . Tad Matheson  
Council Secretary . . . . Courtney Dietsche  
Congregation Treasurer . . . . . Don Miller  
Mary Johnson-Garay, Colleen Elonen,  
Ted Nelson, Sandy Breitzmann and Jeff Gronski

**PLC ONLINE** ~ Check out Pilgrim's website at [www.plcsuperior.org](http://www.plcsuperior.org) for the monthly calendar and newsletter, pictures, and much, much more.

**PLC ON FB**: Go to your **FACEBOOK** page. Enter 'Pilgrim Superior' in the search box. When Pilgrim's FB comes up, **'LIKE'** it. You can then see regular PLC news, updates and photos.

### Community Thanksgiving Meal and Worship

Join us for an ecumenical Thanksgiving meal and worship service on Sunday, November 24<sup>th</sup>. This event is sponsored by the Superior Area Ministerium and will be hosted right here at Pilgrim. Meal is at 5:30 with Worship at 6:30. We are asking members of the community to bring a side dish or dessert to share. You can also contribute to the Thanksgiving Bake Sale – drop off baked goods by noon on the 24<sup>th</sup> with a clear label of what you've made, or come and buy some yummy treats to take to your Thanksgiving gathering later that week! Look for sign-ups to help with set-up and invite folks from around the community for a fun night for food, fellowship, and faith together.



# NOVEMBER SERVERS

*Below is the list of those who are signed up to help with our worship service. If you are signed up and cannot make it, please find someone to fill in for you and also let the office know. Thank you to all of you for helping with our worship here at Pilgrim.*

*Praise God from whom all blessings flow!!*

## November 3 – All Saints Sunday

**Ushers:** Team 4: Tyler Austreng, Capt.  
**Worship Asst:** Noah Holland  
**Sound System:** Fred  
**Altar Guild:** Rachel and Colleen  
**Hospitality:** Laura Swanson  
**Greeter:** ??? anyone

## November 10 – Twenty-Fifth Sunday after Pentecost

**Ushers:** Team 1: Ted Nelson, Capt.  
**Worship Asst:** Jan Cummings  
**Sound System:** Colleen  
**Altar Guild:** Elaine & Mary  
**Hospitality:** Jan Cummings  
**Greeter:** ??? anyone

## November 17 – Twenty-Sixth Sunday after Pentecost

**Ushers:** Team 2: Tad Matheson, Capt.  
**Worship Asst:** Evie Warring  
**Sound System:** Jeff  
**Altar Guild:** Sandy and Theresa  
**Hospitality:** Mary Matheson  
**Greeter:** ??? anyone

## November 24 – Christ the King

**Ushers:** Team 3: Jeff Gronski, Capt.  
**Worship Asst:** Colleen Elonen  
**Sound System:** Jamie  
**Altar Guild:** Laura and Greg  
**Hospitality:** Barb Manion  
**Greeter:** Sandy Breitzmann



We are taking orders for poinsettias. They must be turned in by the 8<sup>th</sup> of December with the money. There are forms at church to fill out. Cost is \$13.00 this year.

Thank you in advance to all who help make the church beautiful for our Christmas Eve worship.

## Financial Report

September 2024

Total General Giving:	\$ 11,076
Other Revenue:	2,552
Expenses (excluding utilities)	- 15,041
Utilities	- 163
Borrowed from savings to pay bills	(3,400)

These figures have been submitted by Don Congregation Treasurer.

## Scripture Readings November 2024 Lectionary B

### November 3 – All Saints Sunday

Isaiah 25:6-9  
 Psalm 24  
 Revelations 21:1-6  
 John 11:32-44

### November 10 – 25<sup>th</sup> Sunday after Pentecost

1 Kings 17:8-16  
 Psalm 146  
 Hebrews 9:24-28  
 Mark 12:38-44

### November 17 – 26<sup>th</sup> Sunday after Pentecost

Daniel 12:1-3  
 Psalm 16  
 Hebrews 10:11-25  
 Mark 13:1-8

### November 24 – Christ the King

Daniel 7:9-10, 13-14  
 Psalm 93  
 Revelations 1:4-8  
 John 18:33-37

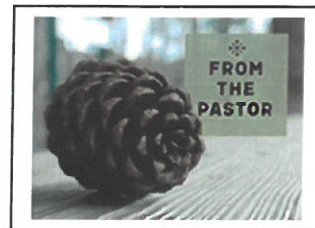
## Church Attendance

September 2024 - (5 Sunday Services)

Total In-House Sunday Attendance:	366
Average In-House Sunday Attendance:	73
Total Online Sunday Attendance:	167
Average Online Sunday Attendance:	42
Total Combined Sunday Attendance	533
Total Average Sunday Attendance:	115

November 2024

Saints and Siblings in Christ,



This month marks my 1-year anniversary of being your pastor. Thank you, thank you, thank you for the joy and privilege of serving with you and walking the walk of faith as God's people in this place. Through the highs and the lows, the wild successes and faithful failures, I can honestly say that it's been a blast and I am grateful to be your pastor.


And while I'd love to wax poetic through my entire article about all of the cool things we've done this past year (and y'all, there are soooooooo many cool things), I just can't. Because we have so many more things coming up! In a month where election season meets craft fair season meets hunting season meets soup season, plus Thanksgiving and Christmas prep, we figured we'd toss a couple more opportunities for fun and community into the mix. From Community School classes to the International Food Fair, Community Thanksgiving meal and worship to new member classes. Confirmation, Youth Group, Campus Ministry, and Sunday School. Line dancing, Theology on Tap, Girl Scouts, and Bible Study. There's something for everyone here at Pilgrim!

I often think back to a conversation I had with a few folks when I first started here last year. They were worried that I would be bored and that there couldn't possibly be enough going on around here for a full-time pastor to stay busy and engaged. Friends, I assure you – never once have I had a boring day in my time here! The Holy Spirit is moving in this place through your hands and feet, through your walking the walk of faith, through your intentional work in serving this community. I am excited for the new adventures we'll go on in the year to come.

Peace,

Pastor Tanner





## Theology on Tap

A space for faithful folks and questioners alike to gather, learn, and grow in faith

Wednesdays at 7:00  
@ Tap on Tower  
1106 Tower | Superior

Questions? Contact Pastor Tanner at Pilgrim Lutheran Church


## EVENING PRAYER

Join us for a time of meditative worship on Sunday evenings at 6:30. A time to calm your mind and talk to God. You are welcome here.



Pilgrim Lutheran Church  
820 Belknap Street | Superior

### Coins for the Community.



#### Good SAMaritan Fund


We will be collecting spare change for The Superior Area Ministerium's Good SAMaritan Fund through the end of the year. This fund is maintained by the pastors of Superior area churches and is used to help members of our community with emergency funding for prescriptions, utility bills, and gas cards. Thank you for your support!

Also on the table by the coins we are still collecting pop tabs. They will be going to the Ronald McDonald house in Duluth. These go to the funding of having families stay with their kids while they are in the hospital. It means so much to be able to have your family with you when you are going through medical things. Lets fill up the jars.

*Molly has been collecting the pop tabs – she wishes to extend her thank you to everyone who has brought them in. She will continue to collect them. Thank you again!*

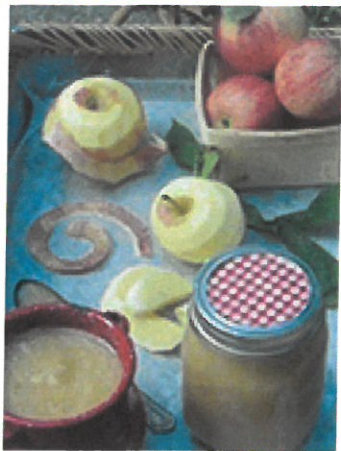
## Attention All Thrivent Members!

Did you know that as a member of Thrivent you are eligible for TWO \$250 Action Team Grants each year? These grants provide seed money to help do projects that benefit our community and are a great way to bolster the different ministries of our congregation. If you are a Thrivent member and have an Action Team Grant that you would be willing to share on a project this fall, let us know! From community meals to hygiene kits to service projects or any idea you have – we would love to partner with you. Contact the church office for more information.



## Pilgrim Community School – Canning Apple Pie Filling

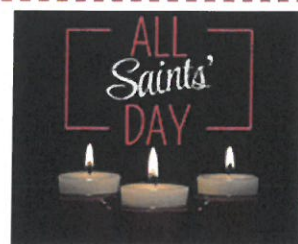
November 9<sup>th</sup> @9:00



Interested in learning about canning and water bath methods of food preservation? Want to try your hand at canning food and get to leave with some delicious apple pie filling? Join Pastor Tanner on Saturday, November 9<sup>th</sup> starting at 9:00 a.m. for a practical, hands-on lesson and canning event. We'll be using apples from Pilgrim's very own tree! All materials will be provided, but if you have jars that you'd be willing to donate, please let Pastor Tanner know. Sign-ups are required and is available in the narthex or by calling the church office.

## All Saints Sunday

We will celebrate All Saints Sunday during worship on November 3<sup>rd</sup>. In addition to naming those who have died from our community of faith in the past year, we are inviting you to lift the names of other Saints who have gone before us. There is a stack of paper doves in the narthex. Please take as many as you would like and write the name of your loved ones on them before returning them to the basket provided. You may decorate them however you wish or simply write a name. We will use these as part of worship on the 3<sup>rd</sup>.



## International Food Festival

Saturday, November 16<sup>th</sup> – 5:00pm



Back again for another year, we're excited to invite you to the annual International Food Festival on Saturday, November 16<sup>th</sup> at 5. Members of the UWS International Student Association will be cooking an array of delicious dishes and you are invited to attend. Look for more information on bulletin boards and on our Facebook page.

## Youth

Confirmation continues to meet on Wednesdays from 4-5 in the youth room downstairs. All interested students 7<sup>th</sup> grade and older are always welcome! Contact Pastor Tanner for more information.

Confirmation Class



Youth Group meets on Sunday evenings at 5:30. Middle and High school students are welcome to attend! Contact Noah ([noah@plcsuperior.org](mailto:noah@plcsuperior.org)) for more information.



## Christmas Eve Services at Pilgrim | 4:00 p.m. and 10:00 p.m.

Join us for Christmas at Pilgrim! This year we will have two services, each distinct but both filled with Christmas spirit as we celebrate the birth of Jesus.

4:00 p.m. – The ABCs of Christmas | Join us for a special kid-friendly service with a fun retelling of the Christmas Story with (optional but encouraged) congregation participation.

10:00 p.m. – Carols, Communion, & Candlelight | We gather for a traditional service of carols and the Christmas story as we celebrate the coming of Christ.



**Christmas Day Meal – Zion Lutheran Church from 1:00- 3:00 p.m.**  
Anyone is welcome to attend.

## Archives Team Meeting – November 12<sup>th</sup> | 9-noon

Interested in history? Want to learn more about our long history here as Pilgrim Lutheran Church? This is the group for you! Our new Archives Team will be meeting on Tuesday, November 12<sup>th</sup> from 9-noon to begin the process of cataloging some of our 136-year history as Pilgrim People in Superior. We'll look into what we have and develop a process of preserving and displaying objects. For more information contact Jean Miller or the church office.

Church  
Archives



## Bethlehem Garage Sale

In December youth in our congregation will have the opportunity to 'shop' for their families and friends for the Christmas season. Shopping will occur for students on Sunday, December 7<sup>th</sup> during our usual Sunday School time, and then the space will be open to others in the community to peruse and purchase from. We are looking for donations of new and gently-used household items, toys, and general knick-knacky things, AND wrapping paper, gift tags, bags, and bows. Items can be dropped off on the marked table in the narthex. We are also looking for volunteers to shop with students and folks to help wrap presents. Thank you!

## And Update on Facility Projects



You may have seen the lifts and ladders going up around Pilgrim over the past few weeks. We are in the process of doing a major roof repair project that will seal and protect our flat roof spaces and take care of our leak issues in the offices and sanctuary. We are also working on a new front door buzzer system, energy efficient lighting, and updates to the heating and cooling units in the offices and chapel space. A huge thank you to the City of Superior Nonprofit Grant Program which is allowing us to do these projects! Please take a moment to call, email, or write to your city council representative and thank them for prioritizing nonprofit organizations serving our community!

## Thanksgiving Worship & Community Meal

**Sunday, November 24th**

5:30 | Meal & Bake Sale

6:30 | Community Worship

Hosted by the  
Superior Area Ministerium

820 Belknap Street  
Superior, WI

## United Campus Ministry

Our new campus ministry program is up and running here at Pilgrim! We are responsible for providing the meal on **Sunday, November 24<sup>th</sup>** which is also our community thanksgiving meal and worship service. Look for sign-ups in the narthex to help with this event, and plan to join the students any Sunday night for a meal and conversation if you are available. All are always welcome!



### Lefse Anyone?

Come and make Lefse with us!  
Learn, Practice, Take Some  
Home, Freeze some for Christmas.  
When: December 7, 2024  
From: 10:00 – Noon  
Where: Pilgrim Lutheran Church  
Basement  
Any questions talk to Jan  
Cummings or Sue Winner



**UNITED**  
Campus Ministry

*Faith Together*

Sundays at Pilgrim Lutheran Church  
820 Belknap St. | Superior, WI

**Sunday  
Night  
Suppers**

**Free Meal,  
Worship &  
Study Space  
5:30-8:00**





## Things coming up

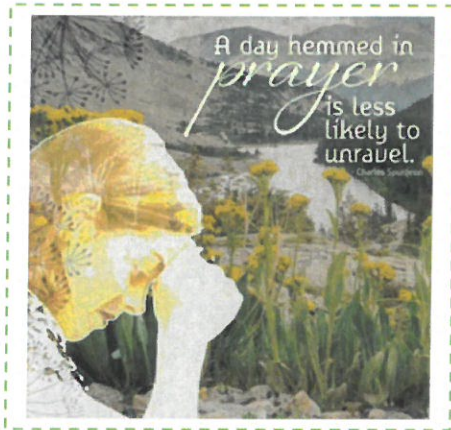
# Bethlehem \* Garage Sale

## DONATIONS NEEDED

Help us provide a fun, free, Christmas shopping experience for our church kids. Donate new and gently-used household items, toys, and general knick-knacky things to this year's sale.

We also need wrapping paper, gift tags, bags, and bows.

Sale scheduled for Sunday, Dec 8th  
Volunteers needed to help shop and wrap!



Pilgrim Community School

# APPLE PIE Canning

NOVEMBER 9

9:00 a.m. | Sign-up Required

LEARN HOW TO PREP AND PRESERVE APPLES USING PRESSURE CANNING AND HOT WATER BATH METHODS

Contact Pastor Tanner for more information

A collection of watercolor-style illustrations of pumpkins in various colors (yellow, orange, green) and autumn leaves in shades of green, yellow, and red.

# All Saint's Sunday

Join us for a special service of remembrance as we pray and give thanks for the lives of those who have died and rest in the promises of God.

November 3, 2024

Pilgrim Lutheran Church  
820 Belknap St.  
Superior, WI

[www.PLCSuperior.org](http://www.PLCSuperior.org)



Pilgrim Community School

## Let's make Lefse!

Learn how to make lefse with our resident experts!  
Saturday, December 7th 10-noon  
Sign-up in the narthex



## **Eliza Wilson**

### **Violinist**

Eliza (translates as Joyful in Hebrew) is Pilgrim's violinist. One of her favorites pieces is Jessie Montgomery's Strum for string orchestra. The violin can be traced back to the early 16<sup>th</sup> century. A pristine violin, a Stradivarius dated to 1535, is on display at the Ashmolean Museum in England. Even earlier religious paintings include the violin.

Eliza studied the violin at UWS as a music student. She is a graduate of Superior Senior High School. Besides being a professional performer she conducts an independent teaching practice with over 30 students two of which are virtual learners from New York. She is also Adjunct Faculty at Lake Superior College.

An avid chess player, she teaches intermediate and beginner chess. Currently taking chess lessons from a National Master, Eliza is a competitive chess player in United States Chess. She enjoys mathematics and teaches as a math tutor. Her other interests include reading science fiction, biking and cooking.

"I am enthusiastic about many subjects. I find teaching to be a real joy and fun..This summer I organized my first fiddle music group with nine students- mostly adults. We gave a performance at a senior living facility and a street performance. Pilgrim is important to me because I feel connected to other people here and part of something I feel good about. A sense of community."

Eliza brings our worship and music to life with her bow. Most days and some evenings you can find her teaching in our library room. Making music and teaching are her passions. Our church plays a part in doing the things she loves while serving others.



## **Pilgrim Lutheran Church Presents**

# **A Service of Lessons & Carols**

*and the*

## **Saint Lucia Vesper Tea**

Sunday, December 15th  
4:00 p.m.  
820 Belknap Street  
Superior, Wisconsin

Curtis Hanson | Director  
Lorelei Holland | Accompanist

## **LINE DANCE LESSONS**

### **"LET'S DANCE"**

Every Tuesday  
5:30-7:30 p.m.

Pilgrim Lutheran Church  
820 Belknap Street  
Superior, WI

\$5.00 per person per hour

Facebook: Line Dancing with Jean

Email: drolsonj@yahoo.com

Text or Call: 218-390-0418



**BATTLE OF THE BADGES**

*Note for your favorite agency!*

**BLOOD DRIVE**

Monday, December 2 | Noon-6  
Pilgrim Lutheran Church, Superior

Tuesday, December 3 | Noon-6  
First United Methodist, Duluth

Sign-up today! Use the QR codes above or call  
 1-800-RED-CROSS or visit [RedCrossBlood.org](http://RedCrossBlood.org)

Pilgrim Lutheran Church

**CONFIRMATION**

Wednesdays 4-5

**HURRICANE RELIEF FUND**

**SPIRIT LUTHERAN FOUNDATION TO MATCH "DOLLAR FOR DOLLAR"**

Spirit Lutheran Foundation is pleased to announce that they have created a Hurricane Relief Fund to assist those persons who have been affected by Hurricanes Helene and Milton in the southeast region of the United States.

All gifts will be matched by the Foundation "dollar for dollar" to a maximum of \$50,000. All donations are 100% tax deductible.

We have chosen ELCA's "Lutheran Disaster Response" as the recipient of our collective donations for a number of reasons; they are a "faith-based" organization that is committed to using 100% of our donations going directly to their relief efforts, plus they are a proven organization that will be there for the long haul, well beyond the initial efforts.

We hope to close this campaign by mid-November so act now, thousands of people need our support.

Let's all come together and make an impact for those people in need.

**HOW TO DONATE**

Spirit Lutheran Foundation  
 1310 Main Street  
 Eau Claire, WI 54701  
 Memo Line: Hurricane Relief Fund

[spiritlutheran.org/foundation](http://spiritlutheran.org/foundation)

Violin lesson's scheduled throughout the month

# November 2024



Sun      Mon      Tue      Wed      Thu      Fri      Sat

3	9:30 Worship (All Saints Sunday) - Usher 4 10:15 Sunday School 10:45-11:30 Bell Practice 4:00 NA 5:30 Youth Group 5:30 Campus Ministry meal and Ministry 6:30 Evening Worship	4	5	6	7	8	9
10	9:30 Worship - Usher 1 10:15 Sunday School 10:45-11:30 Bell Practice 1:30 NA committee 4:00 NA 5:30 Youth Group 5:30 Campus Ministry meal and Ministry 6:30 Evening Worship	11	12	13	14	15	16
17	9:30 Worship - Usher 2 10:15 Sunday School 10:45-11:30 Bell Practice 4:00 NA 5:30 Youth Group 5:30 Campus Ministry meal and Ministry 6:30 Evening Worship	18	19	20	21	22	23
24	9:30 Worship - Usher 3 10:15 Sunday School 10:45-11:30 Bell Practice 4:00 NA 5:30 Youth Group 5:30 Thanksgiving Community Meal & Bake Sale (Campus Ministry) 6:30 Community Worship	25	26	27	28	29	30

1  
9:00-noon  
Quilting Group

9  
9:00-noon  
Canning for  
Apple pie filling

14  
10:00 Bible Study  
UWS doing prep for Saturday around 4:00 both days

15  
Progress  
Articles  
Due

21  
No Bible Study-  
Pastor's Conference  
Gathering  
4:30-8:00 Mocktail  
Class-Community  
Event

