



**Pilgrim Evangelical
Lutheran Church**
820 Belknap Street
Superior, WI 54880
(715) 392-4731

Non-profit Organization
U.S. POSTAGE PAID
Superior, WI 54880
Permit No. 1194

Sunday Worship Service

9:30 a.m.

Online at www.plcsuperior.org

Facebook: [PilgrimSuperior](https://www.facebook.com/PilgrimSuperior)

RETURN SERVICE REQUESTED

If you change your address or phone number, or have a temporary address, PLEASE CALL US AT 715-392-4731.

Pilgrim's Progress

Pandemic Edition

November / December 2020

ONLINE WORSHIP

ANYTIME ON THE PLC WEBSITE

www.plcsuperior.org

OR ON FACEBOOK AT

PilgrimSuperior

Church Office Hours

Monday - Thursday ~ 9 a.m. - 1 p.m.

At the suggestion of Pastor Will and council president, Colleen Elonen, we are going to mail the monthly letter update in the format of the Pilgrim newsletter. Although many of the features of the regular newsletter will not be included, we hope the mailing will be welcome and informative.



When asked to describe what following God looks like, Jesus said, “Love your neighbor as you love yourself.” Another time he said, “Treat other people the way you want to be treated.”

I want to thank you for doing that ever since the middle of March, when the pandemic gripped America and the world. Pilgrim people have pretty much been staying home except for necessary trips and when they cannot work from home. We wear masks when out. We keep a safe distance from other people. We have not taken foolish risks by gathering for worship or for anything else in our beautiful church building.

No one likes this. Doing these things unavoidably brings all kinds of personal and national losses. But we understand and accept that this is now the best way to treat our neighbors as ourselves. We are treating people like we want them to treat us, by not doing things that could infect them. I am thankful and proud that Pilgrim people are doing all of this.

It looks like it will be many months before we can gather safely. The virus, the wise and the foolish behaviors of fellow citizens and political leaders, and vaccine development and distribution will all play into safe-reopening. Pilgrim will keep paying close attention to these factors, and to the guidance we get from health experts in medicine and government. We also get guidance from our church leaders who work closely with those experts. Right now all guidance from these trustworthy sources clearly tells us not to gather in person. When the time for that does come, we will follow their detailed, strict guidance regarding group size, distancing, masks, cleaning, airflow in rooms, disinfecting, and just what is and what is not safe to do. Gathering, especially at first, will be time intensive and work intensive. Safety will take many people before, during and after any gathering. We will move to more normalcy slowly, as conditions dictate.

Outreach and Witness: UWS International Administrator is looking for a host family until the end of the school year. A Japanese student wants to come to the Twin Ports. She needs a host family until next Fall.

Discussion: Is there more we could be doing with other churches in the area? Can we support other activities going on around the area? What is the role of the church in a health crisis or disaster? That question has been asked during synod meetings. One idea would be mittens for the elementary schools or community. What can we design from scratch that makes sense and we could pull off? We are still wanting to serve the community so collecting mittens and hats or donating items for Samaritan boxes are an idea.

Many of the Pilgrim directories are still available in the office. How do we get them to people? People can stop by and pick them up between 12 and 1, or they can be mailed. Please call the church office to arrange pickup or delivery.

Stewardship: Colleen is going to put together a letter for the stewardship drive.

Budget is driven by when the church opens. Major expenses would not change, as heat, electricity and lights are still being used weekly by staff. The big question is when the church will be able to reopen, but Don asked if anything extraordinary in the area of money might come up in terms for annual budget preparation. Worship and Music committee (Sam Gray) mentioned reconditioning the organ, which will probably cost a lot of money.

Many of the Pilgrim directories are still available in the office. How do we get them to people? People can stop by and pick them up between 12 and 1, or they can be mailed. Please call the church office to arrange pickup or delivery.

Meeting adjourned at 7:33.

Pastor closed with the Lords' Prayer.

Respectfully submitted,
Mary Johnson-Garay
Church Council Secretary



CHURCH RECORDS
FEBRUARY - OCTOBER 2020

Baptisms: Colton Bryan Wray — August 2
Marriages: None
Deaths: Gloria Berg — February 29
William Ellison — April 2
Alfred Gagne — July 11
Janice Acosta — September 7
Cindy Bennett — September 29
Caren Gagne — October 13
Irvin Rounsville — October 15
Yvonne Vinje — October 22
Christine Maloski — October 30

Recently one of our volunteers had to replace our two sump pumps at a total cost of app. \$335. If you can help defray this expense it would be appreciated. Please indicate “sump pump” in your donation. Thank you.

PILGRIM LUTHERAN CHURCH COUNCIL

President: Colleen Elonen
Treasurer: Don Miller

Vice-President: Andrea Rubesch
Secretary: Mary Johnson-Garay

Tyler Austreng, Kristin Cochran, Jenny Dudderar, Dale Johnson, and Jamie Peterson
These people have been elected by you to be spiritual leaders and to oversee the operation of the congregation. Please feel free to contact them with your concerns and comments.

Pilgrim Lutheran Church Council Minutes (via Zoom)

February 18, 2020

Call to Order: Meeting called to order at 6:33 by Pres. Elonen

Roll Call: Will Mowchan, Jenny Dudderar, Kristin Cochran, Mary Johnson-Garay, Colleen Elonen, Don Miller, Dale Johnson, Tyler Austreng. Jamie Peterson and Andrea Rubesch excused.

Minutes: Jenny made motion to accept September minutes; second by Don. All in favor.

Treasurer's Report: Good month for Pilgrim overall. Income went up a bit and our expenses lower. Pensions and ELCA benefits went down due to Pastor changing to Medicare. Savings will be ongoing as Pastor Will is now not on a called position. Pastor Will moved to accept the report and Jenny seconded.

Pastor's Report: Number of serious illnesses and deaths affecting Pilgrim members. Pastor is spending majority of his time on phone with families and continuing education classes. One recent class was "Continuing Education on White Privilege" and how the church is dealing with it.

Matt Dietsche and Sam Grey are recording family Advent services. They will film the services on October 31st. Annual Lessons and Carols program will also be done, albeit virtually this year. Recording of Christmas songs will start in November. Suzie Warring has been asked to portray St. Lucia within the Lessons and Carols.

Confirmation classes going well; about 20 people show up online and are being taught by staff from Zion Lutheran. Students are engaged as well as adults.

Our Missionary Steve Friberg reached out to Pastor; he is in the United States currently receiving some medical treatment. He and his wife Bethany are heading back to Tanzania. They will continue their work there for the time being.

Long time Pilgrim member, Irvin Rounsville has died. He was 99 years old. Pastor is conducting graveside service for the family.

Congregational letter of Stewardship will be mailed to the congregation, and include a letter regarding contribution analysis. The contribution report counts the households that are giving each week. This will give the congregation an idea of how many families are giving. It is a snapshot of what is going on with some quick explanation. Average weekly amount is \$2386.00. Deadline for stewardship forms will be November 30, 2020.

Old Business/New Business: Church will reopen when numbers allow us to do it. The numbers are not looking good at this time. Two weeks of declining numbers in our area is necessary before opening can be considered. We can put a plan together just to give people an idea that we are thinking about reopening, but local health measures and what is needed in order to open must be in place, there are many things that will need to be done.

Fred Dudderar has been doing an amazing with the video work and we so appreciate his dedication and hard work.

Property: Boilers are on and working fine. Everything is set for winter. Currently Mark only works Fridays. He will be asked about coming additional days to shovel snow; otherwise committee will reach out to volunteers to help.

Superior Small Batch contract will pay \$100 more a month for the new storage closet. Their annual rent is \$13,100; they will be using kitchen areas Tuesday - Friday. Jenny makes a motion that the committee can approve his contract by email. Seconded by Don.

I'm also proud that we have stayed together even when we cannot be together. You watch out for each other in many personal ways. Together we have worshipped online. We have served our neighbors. It's not the way it was, but it's working. Thank you!

We will keep on keeping on. That means all the things I mentioned above, and in the near future it also means special holiday services and music online. It means serving our neighbors in Superior, too. (Please read the other articles here about that.)

Thank you for who you are and for what you do.

Your Pastor,
Will Mowchan

NEWS AND UPDATES

Mittens, Hats, Scarves and Socks!

Cold hands and ears are bad news! Please help make good news by warming them up! Natalie, a Superior High School senior and neighbor of Pastor Will, is gathering new mittens, gloves and stocking caps for students at Superior elementary schools and for moms and kids at Superior's abuse shelter.



Pease buy and donate some of these items for our chilly neighbors! Or, if you knit, the items you make are also perfect for this. You can drop them off in the box in front of Pastor Will's house at 3015 Weeks Avenue. There is also a drop off box on the front porch at Natalie's house in Superior's east end at 2204 East 14th Street. Please drop items off by Monday, November 30.

If you would like we are also accepting monetary donations, that we will use to purchase socks, gloves, and hats. You can mail checks to Pilgrim Lutheran Church, 820 Belknap Street, Superior WI 54880. Please make checks out to Pilgrim Lutheran Church, with 'mittens' written on the memo line.

Gloves, mittens, scarves and hats mean the world to people who don't have them. That's especially true now, when the pandemic has strained many family budgets and has caused a big increase in the number of women and children who need shelter. Thank you very much!

You Can't Go to Italy Now, but Italy Can Come to You

Pilgrim and the UWS Office of International Studies have a really good relationship. This is from Mark MacLean, one of the International Studies Administrators and Pilgrim friend.

Sofia Candela is the friend of UWS international student Alessandro Schiffano. Both of them are from Italy. Alessandro has told her many positive things about the Twin Ports, causing her to become quite interested in living here and going to high school. She is being assisted by an exchange agency, Master Studio, that doesn't have contacts in the Twin Ports, so she has reached out to me for help. Although UWS isn't in a position to make such a placement I'm reaching out to Pilgrim Lutheran Church, given our long-standing relationship and all of the much appreciated support the church has shown our students over the years. Sofia has stated that she will do COVID precautions.

Interested? For more info contact Pastor Will at wmowchan@gmail.com

Or Contact Mark MacLean at mmaclean@uwsuper.edu



A NOTE FROM GARY CHRISTENSEN RE: HELEN CHRISTENSEN

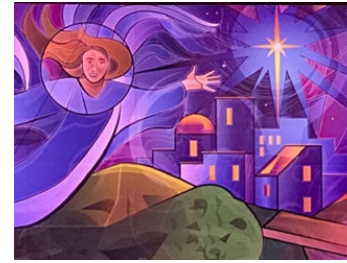
Hello -

Mom is still doing OK at the Villa. She has a Trac phone. If you call Villa — transfer to the nurses' station. Ask them to go answer her phone, then call Helen at 715-919-7240 and they will answer and give her the phone. She will look forward to your call. We are all doing fine.

ONLINE WORSHIP available anytime at
www.plcsuperior.org

Click on the 'sermons' tab.

A CHRISTMAS MESSAGE FROM THE BISHOP



The CRISIS of CHRISTMAS¹

Dear Members and Friends of the Northwest Synod of Wisconsin,

Christmas 2020 will occur while we are living through of a series of crises. Here's the list: the pandemic, economic losses, protests against racial injustices, an ongoing climate crisis, and a divided country following a contentious presidential election. I'm not going to lie, it's been stressful for me, and I imagine it has been for you, too. As Christians, we have been moving through these crisis-filled days with the expectation that God is present and God's promises are true. We move forward with hope.

The two Chinese characters for the word "crisis," 危机, have often been translated as "danger" and "opportunity." Others say that a better translation is "danger" and "change point." What dangers do you see as your congregation moves toward celebrating the Birth of our Savior – Christmas - in a totally new way? What "opportunities" or "change points" do you see that could propel your church forward in a positive way into God's future?

Mary experienced a theological crisis when the angel Gabriel revealed to her God's plan to enter this world by the baby in her womb. Mary's body was the center of a theological crisis² - much like the theological crisis caused by a virus that has invaded the bodies of our loved ones, and the theological crisis of abused and broken black and brown bodies, and the theological crisis experienced in the misuse of this planet on which all bodies live. Where is God in the crisis? What does this mean?

In a crisis, God comes to us. John 1:1,14 *In the beginning was the Word... and the Word was God...And the Word became flesh and lived among us.* Jesus is God, divine and human. God took up residence and moved into our neighborhood. God goes where God's people go and is who the people are³. This is the theological promise of John's gospel. God is present with us in our times of crisis and suffering. This is the foundation of Luther's theology of the cross.

God is revealed through the crisis of Mary's pregnancy and Jesus' untimely birth in a Bethlehem barn. God is revealed in the crucifixion; through the body of Jesus, hanging on a cross. God is revealed through the risen body of Jesus on Easter Morning.

No matter how different Christmas is for you this year, no matter what crisis arises, God is there, present as promised, in the WORD made flesh. May the story of Jesus' birth bring you much needed joy and hope this holiday season and may the presence of God comfort you in the new year.

AMEN

¹ Photo credit: Design by Artist Paul Johnson for the 2019 Concordia College Christmas Concert Mural

² Thank you to Dr. Karoline Lewis for her thought provoking presentation to NWSWI on 11/7/2020 that inspired this article.

³ Dr. Karoline Lewis, Working Preacher.org, Dec. 2016

FROM OUR FRIENDS AROUND TOWN



From Zion Lutheran Church:

The Tuesday's Spiritual Growth and Missions Group is still running but most people are cutting fleece or sewing from home due to COVID-19. If you have any questions or want to be involved, please call Tanya Nelson at 218-391-4709. Since the weather switched to snow, we have a very high demand for mittens. Our mittens are delivered to schools, shelters, and non-profit agencies (wherever there is a need). We are looking for donations of fleece at this time. Call Tanya if you would like to have a donation picked up. Checks can be written out to Zion Lutheran Church and put Tuesday's Missions Group in the memo. Thank you and God Bless!

LOGOS via Zoom: Hopefully it won't be too long before we'll be able to gather together again. We miss being together for lessons, enjoying Greg's cooking and games and just hanging out. The schedule is as follows: We will be meeting using Zoom for an hour on Wednesdays, from 4-5. There will be time to share how things are going, watch a video, and have a lesson. You have a workbook so you can work along. We will continue to keep you posted on times and Zoom information. Let us know if you have any questions or know of someone who would like to join us but needs further information. Looking forward to "seeing" you soon! Pastor Victor and the LOGOS Team 715 398 3663.



From Our Saviors Lutheran Church:

Our Saviors Church is offering online Bible studies on Wednesdays from 10:00- 11:00 via Zoom. Please visit their website for the direct link each week. <https://superioroslc.com/>

From Bethel Lutheran Church:



Bethel Lutheran is hosting online Sunday school classes for young children. Each month or so they will send out at home Sunday School boxes with lessons, crafts, and more for young members! Bible stories and lessons will be posted on YouTube for kids to follow. Let the office know if you'd like a box and they will be happy have one available for you to pick up. 715 392 2033. <https://www.bethellutheransuperior.org/>



Candlelight Service of Lessons and Carols
Sunday, December 13th

Given the current conditions with the coronavirus epidemic, for the first time in 83 years since its inception in 1937, there will be no Vesper Tea this year. However, Pilgrim will still celebrate Santa Lucia with the traditional, though modified, Service of Lessons and Carols. This year it will be online only and will feature more scripture and traditional carols to which anyone viewing can sing along. Since it will be online, it can be viewed at any time starting St. Lucia's Day on Sunday, December 13 on the PLC website, (www.plcsuperior.org), on the PLC Facebook page (PilgrimSuperior), or on YouTube.



Suzie Warring has been selected to represent St. Lucia this year. Though we are not able to congratulate her in person, she will retell the history of St. Lucia and be part of the Lessons and Carols service.

Advent Prayer Service
Singing. Silence. Meditation. Prayer.



Starting Wednesday
December 2nd.
Posted Every Wednesday during Advent on the PLC Facebook Page and YouTube.

2021 Envelopes

For those of you receiving offering envelopes, your 2021 envelopes will be available beginning in December. To get yours, we will follow strict COVID guidelines. Please call the church office at 715-392-4731 to arrange a pickup time. Office hours are Monday-Thursday from 9:00-1:00. **Please do not use them until January as your envelope number will change for 2021.**



Directories

Earlier this summer Curt prepared a limited number of new directories of currently active church members which includes your photos taken by Fred Dudderar. They are in the church office and may be picked up when you get your 2021 offering envelopes. Contact the office if you would like one.



From Our Treasurer Don Miller and the Stewardship Committee

For those of you that are giving financially all that you can, we thank you. We do not expect any more from you than what you are already giving, but for many of us if we can give more, a dollar or two a week would make a big difference to our bottom line for income. Giving a dollar is like voting... one vote does not seem to make much difference, but if everyone who could give an extra dollar or two, it would make a big difference! If we collectively could acquire an additional two or three thousand dollars a year, we would reduce our dependence on our endowments and preserve some funding for future lean years. Please give prayerful thought as to how you can help in the life of Pilgrim Lutheran Church, both financially, spiritually, and in all other ways. Remember, your pledge forms can be mailed to the church, and we would appreciate them by November 30. Thank you!

Electronic Giving

Would you find it helpful to have your offerings debited directly from your bank account as you probably do with some of your other bills? Pilgrim offers electronic giving for those who wish to have their contributions transferred automatically to the church's account. If you travel or go south for the winter, this is particularly helpful in keeping up with your intended offerings.



Giving online is easy and allows you to make a one-time donation or set up automatic recurring contributions. You control your own giving frequency! And you can view your complete online giving history from anywhere you have access to the Internet. Contributions can be set up to debit automatically from your checking or savings account. Our electronic giving program offers convenience for you and much-needed donation consistency for our congregation. Simply follow these easy steps:

1. Go to the PLC website at www.plcsuperior.org. Then...
2. ...click on "**Donations**" in the menu bar. This connects you to our online giving page. Then...
3. ...just follow the onscreen instructions to create your own personal online profile and to schedule your contributions.

Our online giving option is hosted by Vanco Services, LLC, and endorsed by Thrivent Financial Services and the ELCA. Data is encrypted and secure to the highest level available.



Virtual Support Group

NEW DAY AND TIME

THURSDAYS

1:30 pm-2:30 pm or 7:00pm-8:00 pm

Come to support group and win a prize!!

Join us a get your name put in for a drawing for a prize. Each time you join us in Nov and Dec, your name will be put in the drawing. Drawing will be done Dec. 11. The more you come the better chance you have to win!

For more information and to sign up, contact your advocate.

715-392-3136

Nov. 5: Future Planning Pt 2 Support Systems

Nov. 12 Life Coaching- Food Budget

Nov. 19-OPEN Table Discussion

Nov. 26-HOLIDAY NO SUPPORT GROUP

Dec. 3-Life Coaching-Decluttering Your House

Dec. 10- Life Coaching-OMgosh, the Holidays Are Here

December 10th will be our last support group for 2020. See you in 2021.

Give to the church from your Smart Phone

Scan the image with your smart phone to connect with a mobile version of the PLC online giving site or go to www.plcsuperior.org and click on the "**donations**" link at the top of the page.



Support for CASDA

Outreach and Witness are supporting CASDA this quarter. We encourage anyone who is able to donate items on this list. For more information, please contact the Community Engagement Coordinator, Jill Hinners, at (715) 392-3136 or jill@casda.org.

CASDA drive

With typical donation drives shut down due to the pandemic, CASDA sent out a Facebook request Oct. 16 for donations.

"We are very low on everything (except dry pasta), so please keep us in mind when you shop next!" they posted.

Needed items include the following:

- Cleaning supplies: 42-gallon heavy duty garbage bags, 13-gallon garbage bags, disinfectant spray and wipes, all-purpose cleaners, laundry soap, Pine-Sol, dryer sheets, dish soap, window cleaner, toilet bowl cleaner, bleach, scrubbing pads, sponges.
- Personal care items: Toilet paper, paper towels, deodorant, shampoo, conditioner, facial tissue, antibacterial hand soap.
- Food: Cereal, canned meat (tuna, chicken, etc.), oil, flour, sugar, sauces (spaghetti, gravy, alfredo), coffee, boxed dinners, soup.

Donations can be dropped off between 8 a.m. and 4 p.m. weekdays at 318 21st Ave. E. or at Angie's Closet during business hours. Call 715-392-3136, email info@casda.org or visit www.casda.org for information.



Support for Harbor House

Pilgrim's quilters reached out to Harbor House crisis center and made donations of 25 quilts and some new pillows to support their temporary housing and shelters. Harbor House accepts donations all year, and items can be dropped off at Faith United Methodist Church at 1531 Hughitt Ave.

From the Harbor House website:

Christmas is Coming in 45 Days!! We realize that due to COVID-19 that things will be a bit different for Christmas presents this year. We want to thank those of you who have already adopted families in our programs!

Things that we are always in need of are pillows, pillows, and more pillows! We do have several students who are doing their projects by making blankets, but we will always take more blankets, quilts, sheet sets (twin & full please), bleach (for sanitizing/cleaning), gloves, hand soap and other cleaning items.

Non-Perishable Holiday foods: cookie mixes, cake mixes & frostings, cookie decoration, canned goods like green beans, french-fried onions, baked beans, box mashed potatoes, pie fillings & pie crusts, Apple Cider, hot cocoa and marshmallows and spices for the kitchen!

Christmas Decorations: wreaths, house decorations, lights.

We will be adding more things as the ideas come! But please, feel free to donate items that you wish!

Holiday time also means cooking! So non-perishables are always welcome, napkins, paper plates, crackers, cheeses, sausages, microwave popcorn, cookies and other snacks for when the clients get out decorations. Oh, decorations you say? Why yes, we can certainly use more! And if anyone would like to venture out to the shelters to decorate the house; we have plenty of masks to go around and the clients would love the Christmas/Holiday cheer! Please call our main office 715-394-9608 and let us know!

Thanks to each and every one of you for wanting to give some of your time and holiday cheer to the folks we serve at Harbor House!"

A COVID MESSAGE FROM THE BISHOP

COVID19 is not over. We are all tired of it. However, we can't let down our guard and slide back into a normal activities yet. We've all made sacrifices and are missing some of our favorite activities; especially Sunday morning worship in our church buildings. I am, too. The virus is now more active in Wisconsin than ever. Now is not the time to let down our guard. Now is not the time to go back to worship inside your church building.

This morning I met with Lt. Gov. Mandela Barnes and religious leaders, and this afternoon I sat in on Gov. Tony Evers COVID19 briefing with the DHS representative Andrea Palm, Dr. Westergard, and THEDA CARE President Dr. Androva. Here's what they said:

- The situation here in Wisconsin is very serious. Alarming trends. Intense virus spread, *exponential spread* ... both community and on the college campuses ... significant ... *not just colleges*.
- Yesterday, Sept 30, WI had highest number of deaths in the state since this pandemic began ... 27
- The state of WI has 72 counties. 45 are categorized as **very high** rate of infection, the rest are in the **HIGH** rate.
- Four days in a row our state has seen record numbers of NEW positive cases – more than 2000 each day, as well as record numbers of hospitalizations...some hospitals are near capacity.

At both of those meetings, Governor Evers and Lt. Governor Barnes called upon the local elected leaders, business leaders and leaders in the faith community for help!

- Keep workers and members of your congregations safe;
- Help individuals believe this is serious - they need to take individual responsibility to keep themselves, their families, neighbors and community safe. Every one of us has a role to play;
- Wear a mask any time you leave your house, keep at least 6 ft. apart, wash your hands, stay out of large indoor gatherings, avoid gathering with people you don't live with, stay home except for essentials, cancel in person gatherings, and stop all large group gatherings;
- This is not politically motivated. **This is a health crisis**. I don't care what political party you affiliate with. You are a beloved child of God and I don't want you to die. At the end of the day we don't want people to die or get critically ill from COVID 19. And, you do not want your church to be the point of community spread.

- We need full public cooperation to flatten the curve, reduce the rise in the number of cases. Challenge misinformation. Hold your leaders accountable so they make safe decisions.

So here is the bottom line. Please keep your people safe. **This is my recommendation: Do not gather for worship inside your church buildings right now.** Continue online worship with Facebook live or YouTube. Use Zoom for meetings. Call on the phone. Facetime. Do what you need to do to keep your people safe. Do the right thing, even if it is the most difficult. For more information check out....

DHS.WI. gov

WCC.org for more information

NWSWI.org

Please pray with me:

Compassionate God,

These are difficult days. There seems to be only bad news. We long for the ways things were before the coronavirus affected all our lives. We especially wish to gather together in our church buildings and to worship you in that familiar and comforting space. We wish to sing our favorite hymns of praise to you. We hunger for the bread and wine you give us in Holy Communion. Help us to be patient and wait until it is safe to gather again church for worship.

We pray for those whose loved ones have died of COVID 19, comfort them in their grief.

We pray for those who are sick with the virus, struggling at home or in the hospital, bring healing.

We pray for researchers and scientists, may they develop a safe vaccine.

We pray for the frontline health care workers, doctors, nurses, therapists, EMTs, and hospital workers, keep them safe so they can care for those who are sick.

We pray for schools, administrators, teachers, staff and students keep them safe and help them learn during these stressful days.

Help each one of us do what we can do to stop the spread of this terrible disease. Help us to make small sacrifices so that all might live.

Lord God, these are difficult days. We are weary and discouraged and fearful. We lift up to our prayers today knowing that your Holy Spirit will intercede for us even when our words fail. Amen.

Together In Christ,
Bishop Laurie Skow-Anderson